

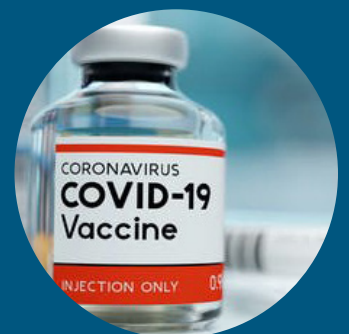


MASSACHUSETTS
PUBLIC HEALTH ASSOCIATION

Action for Equity in Health



ANNUAL REPORT 2021



MISSION

The Massachusetts Public Health Association is a champion for public health in the Commonwealth. We are a catalyst for change, eliminating health inequities and promoting healthy communities for all.

WHO WE ARE

MPHA is a nonprofit organization that promotes a healthy Massachusetts by advocating for effective policies, organizing key stakeholders, and building broad coalitions. We are leaders in the movement to create health equity by addressing the root causes of health and wellness. We promote policies that impact the major drivers of health outcomes, such as access to healthy food, safe affordable housing, and transportation. We also advocate for equitable access to critical public health services across the Commonwealth.

TABLE OF CONTENTS

02 Letter from the Executive Director and Board President

03 Your Stories, Our Campaigns

Transforming Local Public Health

Achieving Vaccine Equity

Stabilizing Housing

Advancing Transportation Justice

07 Financial Snapshot

08 Our Staff, Board, and Policy Council

09 Our Grantors, Sponsors, Members, and Donors

DEAR ALLY AND PARTNER,

In many ways, 2021 was a year of milestones for MPHA. We continued to deepen our commitment to listening to the voices of those most impacted by health inequities – realigning the structure of our policy council with this principle in mind and **working in solidarity with grassroots organizations** in every facet of our work.

We said goodbye to our longtime Policy Director, Maddie Ribble, who leaves behind a strong policy team well-positioned for the challenges ahead, and welcomed a new Deputy Director, Oami Amarasingham, who will be spearheading our policy work moving forward.

We made major strides in our campaign to **transform the local public health system** in Massachusetts, securing \$200M in federal funding to invest across the state and building broad support in the legislature for enacting crucial policy solutions, such as credentialing public health workers and establishing minimum public health standards for every community.

To address the inequities of the state's vaccination program, MPHA continued our work as co-chair of the **Vaccine Equity Now! (VEN) Coalition**, partnering with civil-rights, racial justice, and immigrant justice organizations to demand equity, transparency, and accountability in the allocation of vaccine-related resources.

We also maintained our focus on the social determinants of health, including access to **healthy food, quality public transit, and safe, stable housing**. Many of the partnerships we formed during the COVID-19 pandemic are informing and enriching this work, including our partnership with Homes for All Massachusetts, a statewide formation of grassroots housing justice groups, and our partnerships with community-based transportation advocates across the state.

Looking ahead, we are excited to continue building the movement for health equity in Massachusetts, translating the hard lessons learned over the past two years into new, more equitable policies. As ever, your support is crucial to the success of our work. We are deeply grateful for your participation and partnership.

With appreciation,




Carlene Pavlos
Executive Director




Neil Maniar
Board President



**YOUR STORIES,
OUR CAMPAIGNS**

Transforming Local Public Health

“ I am proud to be working with MPHA to transform the local public health system in Massachusetts. For too long our broken system has allowed deep inequities – and the consequences have been brought home by the COVID-19 pandemic. Too many of our families, friends and neighbors are being left behind. By coming together to demand both adequate funding and fundamental policy changes, we are helping to build a public health system that will be truly effective and equitable for the residents of every city and town in the Commonwealth. Our communities deserve nothing less.”

- **Craig Andrade**, Associate Dean for Practice & Associate Professor of Community Health Sciences at the BU School of Public Health & member of the Brockton Board of Health

Massachusetts communities deserve a 21st-century local public health system that provides strong protections to ALL residents, regardless of race, income or zip code. To achieve this vision, we must transform our current system, which is both inefficient and deeply inequitable. In a sustained multi-year campaign, MPHA and our partners in the Coalition for Local Public Health have been working to do just that.

In 2021, we made remarkable progress by securing \$200M in federal American Rescue Plan Act (ARPA) funds to invest in local public health infrastructure. Now, we are advocating for essential policy reforms, including minimum public health standards for every community, a uniform data collection and reporting system, and dedicated state funding.

Throughout the COVID-19 pandemic, the local public health workforce has played a critical role in keeping our communities safe – from carrying out contact tracing to delivering life-saving vaccines. Unfortunately, they continue to be hampered by the broken system they work within. Now is the time to transform the system and achieve lasting change.



Craig Andrade with fellow advocates



Dr. Atyia Martin

Achieving Vaccine Equity

“ MPHA has been a critical partner and champion in the effort to demand vaccine equity for Black, Latinx, immigrant and working poor communities in Massachusetts. They understand that achieving our equity goals is essential to any successful strategy to contain the virus, reopen the economy, and foster true recovery.”

- **Dr. Atyia Martin**, co-chair, Vaccine Equity Now! Coalition

From the beginning, structural racism has shaped and been deepened by the COVID-19 pandemic. Black, Latinx, low-income and immigrant communities have borne – and in most cases continue

(continued on next page)

to bear – a disproportionate burden of infections, hospitalizations and deaths. When vaccines became available, MPHA joined forces with civil rights, racial justice and immigrant justice organizations to form the Vaccine Equity Now! (VEN) Coalition, advocating for [equitable policies that would direct state vaccination resources to the hardest hit communities](#).

Since its launch, VEN has worked consistently to hold the Baker administration accountable for decisions about vaccine access, while advocating for the establishment of equity benchmarks, collaboration with local officials and community leaders, culturally competent vaccine-related communications, transparency in the allocation of resources, and strong data collection and reporting, which are essential to measure progress towards vaccine equity. VEN also developed and released [Equity Principles for Workplace COVID-19 Vaccine Policies & Safety Practices](#), in order to help local businesses develop and implement policies designed to promote health and well-being throughout their communities.

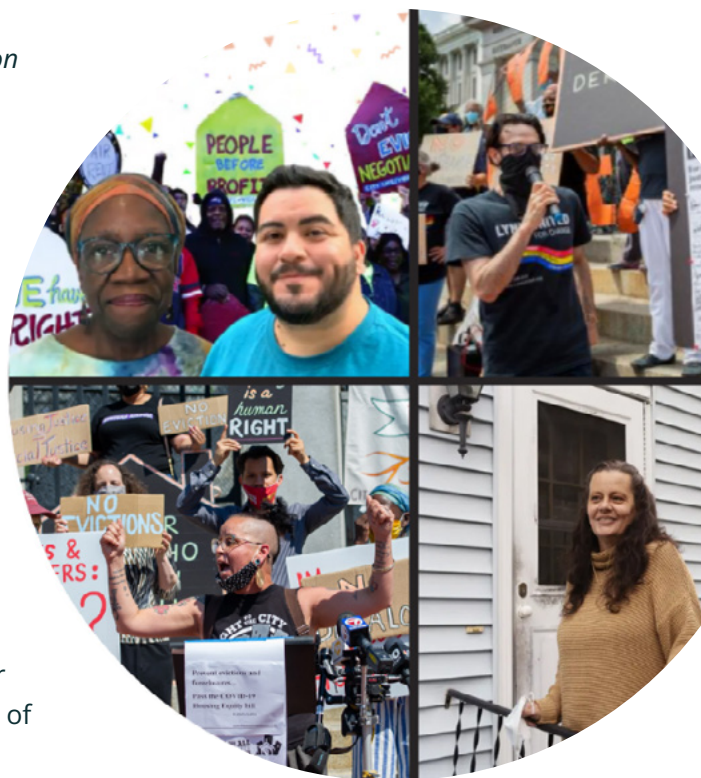
Stabilizing Housing

“Working with MPHA has brought a valuable public health perspective to housing issues. After helping to pass the eviction & foreclosure moratorium during the early days of the pandemic, they have advocated consistently on behalf of tenants and homeowners. As representatives of the Homes for All Massachusetts Coalition, we appreciate their commitment to honoring the leadership of grassroots organizations and those directly impacted by housing instability.”

- **Rose Webster-Smith** of Springfield No One Leaves, **Isaac Simon Hodes** of Lynn United for Change, **Noemi Mimi Ramos** of New England United for Justice, and **Denise Matthews-Turner** and **Mike Leyba** of City Life / Vida Urbana

Massachusetts' long-simmering housing crisis has been exacerbated by the impacts of the COVID-19 pandemic. Since the state moratorium on evictions and foreclosures expired in October 2020, more than [30,000 evictions and foreclosures](#) have been filed, and upwards of [110,000 renters are now behind on](#) their rent. Current housing protections are not enough to meet the scale of this crisis and prevent even more needless displacement.

MPHA, in solidarity with the statewide grassroots Homes for All Massachusetts Coalition, is organizing to stabilize housing in the Commonwealth. A top priority is passing the COVID-19 Housing Equity bill, which would provide immediate protections for tenants and homeowners at risk of losing their homes. We are also advancing anti-displacement, tenant empowerment, and local rent stabilization legislation. Together, these policies would set us on a path for an equitable recovery by ensuring that the hardest hit communities do not continue to bear the brunt of the pandemic's economic impacts.



Clockwise from upper left:
Denise Matthews-Turner and Mike Leyba,
Isaac Simon Hodes, Rose Webster-Smith,
and Noemi Mimi Ramos

Advancing Transportation Justice

“MPHA has been an essential partner in the campaign for affordable and reliable public transportation in the South Coast region. Their expertise in state-level advocacy combined with their commitment to amplifying the voices of local transportation advocates make them a powerful ally.”

- **Sabrina Davis**, Fall River Organizer for the Coalition for Social Justice

Massachusetts' Regional Transit Authorities (RTAs) are a lifeline to the 55% of residents who live beyond the reach of MBTA bus and train lines. By operating bus routes and providing dial-a-ride services for people with disabilities, RTAs connect residents to medical care, food, jobs, and other critical services.

Since major funding cuts were proposed for the RTAs in 2018, MPHA has co-chaired the Regional Transit Authority Advocates Coalition, advocating successfully to protect and expand funding for public transit. In 2021, we secured \$94M in state funds for RTA base operations and worked with our legislative champions to file the RTA Advancement Bill, which would ensure sustainable funding for RTAs, enhance support for capital projects, and support electrification of buses.

MPHA is also supporting the movement for zero fare busing. In 2021, we spoke out in support of several zero fare proposals and assisted the Zero Fare WRTA Coalition with coalition building and strategy development – resulting in the extension of fare free busing in Worcester through the end of 2022.



Sabrina Davis

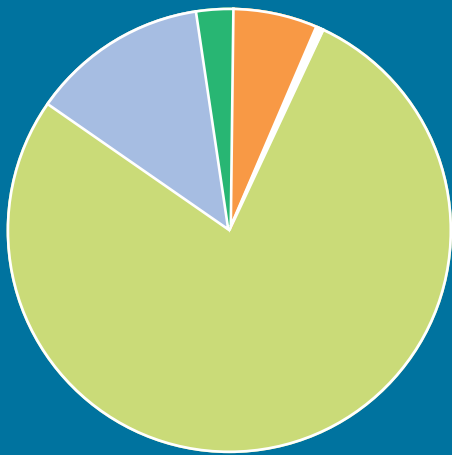


“I have been honored to work with MPHA in the pursuit of true health equity in Massachusetts. Together with partners, we have achieved many milestones, from passing critical legislation to securing historic investments of state funds. I value both MPHA's bold vision for an equitable future and its on-the-ground effectiveness in campaigning for policy change. Right now, we're working together with our allies in the legislature and the Coalition for Local Public Health to institute critical reforms to the local public health system, including credentialing local public health workers and creating minimum public health standards for every community. I look forward to continuing our partnership to create a 21st-century local public health system that will provide strong public health protections for ALL Massachusetts residents for generations to come.”

- **State Senator Jo Comerford**, Senate Chair, Joint Committee on Public Health

FINANCIAL SNAPSHOT

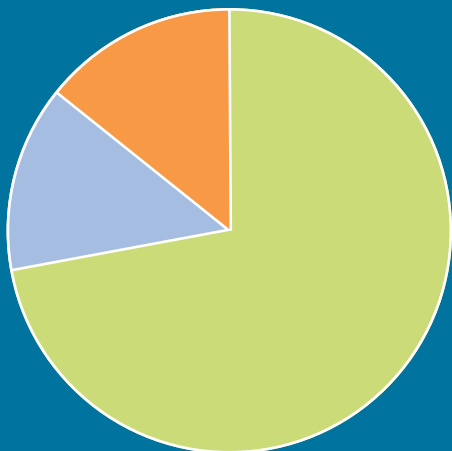
Sources of Funds



- 78%** Grants and Contributions - \$908,180
- 13%** Events and Conferences - \$148,375
- 6%** Membership - \$71,130
- 3%** In-Kind Donations - \$31,940
- 0%** Other - \$3,827

TOTAL \$1,163,452

Uses of Funds



- 72%** Programs - \$762,634
- 14%** Administration - \$142,295
- 14%** Fundraising - \$150,374

TOTAL \$1,055,303

Staff & Consultants

Carlene Pavlos, MTS
Executive Director

Oami Amarasingham, Esq.
Deputy Director

Veronica Cañas, MTS
Operations Coordinator

Ana Hidalgo, MS
Development Manager

Kristina Kimani
Assistant Policy Director

Jeneczka Roman, MPH
Public Policy Specialist

Erin Rowland
Communications Consultant

Tara Shea
CRM consultant

Alexis Walls, MPH
Assistant Campaign Director

Dean Wenick
Web Consultant

Officers

President Neil Maniar, PhD
Northeastern University

President Elect Damōn Chaplin,
MBA, City of New Bedford Health
Department

Vice President
Roeshana Moore-Evans, MBA
Broad Institute at MIT and Harvard

Treasurer Heather McMann, MBA
Groundwork Lawrence

Immediate Past President
Jodie Silverman, MPA
DMA Health Strategies

Board Members

Craig Andrade, DrPH
Boston University School of Public
Health

Cheryl Bartlett, RN
Greater New Bedford Community
Health Center

Clara Chan Farnsworth, MBA
Wellington Management Company

Linda Chan Flynn, MS
Lowell Community Health Center

Daniel Delaney, MA
Delaney Policy Group

Chrismery Gonzalez, MPH
City of Springfield Office of
Racial Equity

Sarita Hudson, MTS
Public Health Institute of Western
Massachusetts

Swannie Jett, DrPH
City of Brookline Health
and Human Services

Stewart Landers, JD
John Snow, Inc.

Keith Mahoney, JD
The Boston Foundation

Anne McHugh, MS
Boston Public Health Commission

Jasmine Naylor, MBA
Massachusetts League of
Community Health Centers

Tavinder Phull, MPH, MBA
Mass General Brigham

Steven Ridini, EdD
Health Resources in Action

Jody Rose, BS
New England Venture
Capital Association

Kent Siri, BA, Reify Health

Aswita Tan-McGrory, MBA, MSPH
Massachusetts General Hospital

Dolores Thibault-Muñoz, Esq.
Committee for Public Counsel
Services

Ex Officio Board Member

Tara DiDomenico

Policy Council

Jamie Berberena,
Groundwork Southcoast

Damōn Chaplin, City of New
Bedford Health Department

Sylvia Chiang-Raposo, Revere
CARES/Revere on the Move

Karyn Clark, City of Worcester
Division of Public Health

Kerrie D'Entremont, Greater
Lowell Health Alliance

Zach Dyer, UMass Medical School

Brenda Evans, UMass-Amherst
Center for Community Health
Equity Research

Paulo Gomes, H&HS Consulting
Group LLC

Irene Hernandez, Active Life Adult
Day Health Care, Fitchburg

Cristina Huebner Torres, Caring
Health Center, Springfield

Anne McHugh, Boston Public
Health Commission

Lesly Melendez, Groundwork
Lawrence

Elecia Miller, City of Lawrence
Mayor's Health Task Force

Jeanette Pantoja, Metropolitan
Area Planning Council

Allyson Perron Drag, American
Heart & American Stroke Association

Catherine Ratté, Pioneer Valley
Planning Commission

Cheryl Sbarra, Massachusetts
Association of Health Boards

Risa Silverman, UMass-Amherst
SPHHS/Western MA Health Equity
Network

Jamiah Tappin, Health Resources
in Action

Angela Wangari Walter, UMass
Lowell, Department Of Public Health

Grantors

AstraZeneca

Blue Cross Blue Shield of
Massachusetts Foundation

Boston Children's Hospital

Kresge Foundation

Massachusetts Department of
Public Health

Neighbor to Neighbor/Community
Health Initiative Fund

Transportation for Massachusetts

Tufts Health Plan Foundation

In-Kind Supporters

Boston University Marketing Club

CommunicateHealth

Foley Hoag, LLP

Event Sponsors

AAFCPAs

American Heart Association

Association for Behavioral
Healthcare

Bay State Community Services

Baystate Health

Beth Israel Lahey Health

Boston Healthcare for the
Homeless Program

Boston Medical Center

Boston Public Health Commission

Boston University School of Public
Health

Boston University School of Social
Work

Cambridge Health Alliance

CareQuest Institute for Oral Health

Community Care Cooperative

Elder Services of Merrimack Valley

Essex County Community
Foundation

Gilead

Greater Lowell Health Alliance

Greater New Bedford Community
Health Center

Groundwork Lawrence

Harvard Catalyst

Harvard School of Dental Medicine

Harvard School of Public Health

Health Leads

Health New England

Lawrence Community Works

Liberty Mutual Group

Massachusetts Health & Hospital
Association

Massachusetts Medical Society

Mass General Brigham

Massachusetts College of Pharmacy
and Health Sciences

Massachusetts Councils on Aging

Massachusetts League of
Community Health Centers

Massachusetts Nurses Association

Master of Healthcare
Administration, Sawyer Business
School, Suffolk University

MORE Advertising

Northeastern University Physician
Assistant Association

Planned Parenthood League of
Massachusetts

Point32Health

Public Health Institute of Western
Massachusetts

Quinsigamond Community College

Regis College

Regis College, School of Health
Sciences, Undergraduate Public
Health Program

Rockland Trust

The Mission Fund

UMass Amherst School of Public
Health & Health Sciences

UMass Lowell Department of Public
Health

Upstream

Viswanath Lab

Tufts University School of Medicine

United Way

Home Health Foundation

Steward Health Care System

Caring Health Center

Essex County Community
Foundation

Organizational Members

Alliance of Massachusetts YMCAs	Fenway Health	Metrowest Health Foundation, Inc.
American Heart/American Stroke Association	Greater Lowell Health Alliance	MLPB
Association for Behavioral Healthcare	Groundwork Lawrence	Massachusetts Organization for Addiction Recovery
Blue Cross Blue Shield of Massachusetts	Harvard Catalyst	Northeastern University, Bouve College of Health Sciences
Boston Children's Hospital	Harvard Pilgrim Health Plan	Planned Parenthood League of Massachusetts
Brookline Public Health Department	Health Resources in Action	Project Bread
Casa Myrna	Heywood Hospital	Public Health Institute of Western Massachusetts
Citizens for Juvenile Justice	John Snow, Inc.	Regis College School of Health Sciences
City of Lawrence Mayor's Task Force	Justice Resource Institute	Revere on the Move
City of Worcester, Division of Public Health	Massachusetts Academy of Nutrition and Dietetics	The Health Foundation of Central Massachusetts
Conference of Boston Teaching Hospitals	Massachusetts Association of Health Boards	Tufts University School of Medicine, Public Health Program
Dana Farber Cancer Institute	Massachusetts School Nurse Organization	UMass Amherst, School of Public Health and Health Science
DOVE, Inc.	Mass Peace Action	UMass Lowell
	Massachusetts Association of Public Health Nurses	
	Massachusetts League of Community Health Centers	

Individual Members

Michael Adegboye	Allison Bauer	Gloria Burnham	Rosemary Connors	Patricia Downs-Berger	Elmer Freeman
Agatha Adigwe	Cynthia Bayerl	Sharon Callender	Ray Considine	Enid Eckstein	Lise Fried
Madina Agenor	Ric Bayly	Jane Cameron	Marty Corry	Rebecca Edelberg	Marie Gabrielle Pierre
Miki Akimoto	Debbie Benes	Scune Carrington	Sallie Craig Huber	Joyce Edmonds	Charlene Galarneau
David Alper	Elizabeth Bennett	Sonia Carter	Helena DaSilva Hughes	Cindy Engler	Helen Ganas
Jill Anderson	Bill Benson	Stacey Chacker	Letitia Davis	Stephanie Ettinger de Cuba	Mathew Gbemu
Jessica Andors	Noah Berger	Jeanne Chambers	Yuki Davis	Ruth Ever	Donald Giddon
Margaret Anshutz	Edward Bernstein	Clara Chan Farnsworth	Hellen Ddungu	Joe-Ann Fergus	Kim Gilhuly
Helen Aroush	Alison Bettencourt	Linda Chan Flynn	Teresa Dean	Rachel Fichtenbaum	Carol Girard
Arlene Ash	Stacey Beuttell	Sonia Chang-Díaz	Daniel Delaney	Matthew Fishman	Garry and Evie Gleckel
Abigail Averbach	Adrianna Boulín	Chris Chanyasukit	Catherine DeLorey	Sarah Fogerty	Velma Glover
Claudia Baier	Mary Bovenzi	Charlotte Chase	Rosanna DeMarco	Lachlan Forrow	Karin Goins
Andrew Balder	Meaghan Bransfield	Sylvia Chiang-Raposo	Charles Deutsch	Susan Foster	Chrismery Gonzalez
Jeanne Baranek-Olmstead	Elana Brochin	Bradley Cohen	Melanie Dineen	Maryanne Frangules	Steven Gortmaker
Tania Barber	Elizabeth Browne	Jessica Collins	Kirsten Doherty	Linda Frazier	George Gorton
Kristen Barnicle	Lisa Brukilacchio		Peter Doliber	Andrea Freeman	Erica Gould
Elizabeth Barry	Malcolm Bryant		Sara Donahue		Tami Gouveia
Cheryl Bartlett			Joe Dorant		Ruth Grabel

Abbie Green	Rebecca Kislak	Maurice	Poremba	Robin	Ralph Timperi
Katherine Greiner	Deborah Klein-Walker	Melchiono	Lauren Poteat	Schmidlein	Mark Umphrey
Dorcas Grigg-Saito	Jamie Klufts	Alice Miele	Barry Potvin	William Schmidt	Jennifer Valenzuela
Jailyn Guzman-Rivera	Milton	Deborah Milbauer	Kalpana Poudel-Tandukar	Karen Schoneman	Debra Vescera
Mojgan Haji	Kotelchuck	Kaelin Montanez	Drita Protopapa	Pamela Schwartz	Amyrah Vicarie
Cathryn Hampson	Dr. Heidi Kummer	Roeshana Moore-Evans	Deborah Putnam	Robert Seifert	Phoebe Walker
Sara Harris	Jo-Ann Kwass	Cesar Morocho	Joan Quinlan	Vinay Seth Mohta	Angela Wangari Walter
Paul Hattis	Tina LaCourse	Nadine Mumford	Serena Rajabiun	Erica Sharp	Miriam Weil
Essi Havon	Stewart Landers	Christine Murphy	Shoba Ramanadhan	Lauren Sheehan	Erin Wentz
Jukka Heikka	Wendy Landman	Laura Nasuti	Jennifer Raymond	Amie Shei	Sara White
Patrick Henry	Donna Latson Gittens	Candace Nelson	Sonia Ribeiro	Risa Silverman	Peggy Wiesenber
Jennifer Hoffman	Mary Lee	Charlene Neu	Steven Ridini	Kim Simonian	Geoffrey Wilkinson
Korey Hofmann	Libby Levison	David Newman	Lisa Robinson	Hathy Simpson	Benjamin Wood
Steve Holmes	Barry Levy	Judith Norsigian	Andrea Roche	Timothy Skalaban	Jan Yost
Christine Hoogasian	Carly Levy	Stephanie Oddleifson	Robert Rofosky	Liam Slattery	Anthony Zhong
Douglas Huber	Wenjun Li	Lea Susan Ojamaa	Annabella Roig	Beverly Smith	Jean Zotter
Sarita Hudson	Rebecca Lobb	John Olawepo	Rebekah Rollston	Clyde Smith	
Michael Hugo	Tina Los	Joice Oliveira	Betsy Rosenfeld	Hiwote Solomon	
Carlton and Marilee Hunt	Lynne Man	Selina Osei	Brian Rosman	Elizabeth Sommers	
Thea James	Leslie Mandel	Marisa Otis	Rachel Roth	Lia Spiliotes	
Patricia Janulewicz	Nancy Manzello	Ruth Palombo	Margaret Round	Jessica Spinali	
Lloyd	Sharon Marable	Maile Panerio-Langer	Lezli Rowell	Laurie Stillman	
Swannie Jett	Edward Marakovitz	Sharon Pero	Kate-Marie Roycroft	Katrin Stinson	
Lara Jirmanus	Ann Martin	Tavinder Phull	Betty Ruth	Patricia Strizak	
Griffin Jones	Atyia Martin	Deborah Picciuto	Joseph Sabato	Maggie Super Church	
Stephen Jones	Airin Martinez	Phaly Pichota	Richard Saitz	Roger Swartz	
Paula Kaminow	Theresa Mason	Allyson Pinkhover	Cathryn Samples	Karen Swietek	
Michele Keane-Moore	Michael Mazloff	Valerie Polletta	Megan Sandel	Aswita Tan-McGrory	
Briana Keating	Mary Ellen McCurley	Rita Pope	Katherine Saunders	Jamiah Tappin	
Mark Kennedy	John McDonough	Barbara	Nancy Schiff	Anne Thompson	
Theodore Kirousis	Heather McMann		Anthony Schlaff		

Major Donors

Cheryl Bartlett	Ralph Fuccillo	Neil Maniar and Ami Bhatt
Noah Berger	Steven Gortmaker	Anne McHugh
Linda Chan Flynn	Sarita Hudson	Tavinder Phull
Jennifer Childs-Roshak	Carlton and Marilee Hunt	Erin Wentz
Alfred DeMaria	Deborah Klein-Walker	Geoffrey Wilkinson
Tara DiDomenico	Howard Koh and Claudia Arrigg	
Peter Doliber	Stephen Kraus	
Matthew Fishman	Stewart Landers	
Lachlan Forrow	Lynne Man	

Donors


Madina Agenor	Bill Benson	Jeanne Chambers	Charles Deutsch	Kelly Flannery	Javier Gutiérrez
Alisa Ainbinder	Jenna Berent	Clara Chan Farnsworth	Leslie Diaz	Jocelyn Forbush	Jailyn Guzman-Rivera
Miki Akimoto	Andrea Bertheaud	Sonia Chang-Díaz	Kirsten Doherty	Susan Foster	Mojgan Haji
Myron Allukian	Stacey Beuttell	Chris Chanyasulkit	Daniel Dooley	Anne Fox	Heather-Lyn Haley
David Alper	Rebecca Bilodeau	Pietra Check	Joe Dorant	Maryanne Frangules	Sharon Hall-Smith
Jacquie Anderson	Nancy Bissell	Sylvia Chiang	Patricia Downs-Berger	Lindsey Fratus	Deborah Hamilton
Jessica Andors	Robert Blendon	Sylvia Chiang-Raposo	Heather Drake	Linda Frazier	Cathryn Hampson
Craig Andrade	Mary Bovenzi	Bradley Cohen	Joyce Dwyer	Andrea Freeman	Veronica Handunge
Margaret Anshutz	Amy Branham	Mary Cole	Angela E Kelly	Elmer Freeman	Maleha Haroon
Arlene Ash	Joyce Brewer	Jessica Collins	Enid Eckstein	Lise Fried	Sara Harris
Jen Audley	Elana Brochin	Lisa Conley	Rebecca Edelberg	Marie Gabrielle Pierre	Jennifer Hart
Abigail Averbach	Bonnie Brodowski	Rosemary Connors	Tara Edelschick	Helen Ganas	Paul Hattis
Andrew Balder	Elizabeth Browne	Ray Considine	Cindy Engler	Donald Giddon	Essi Havon
Kara Bandstra	Mary Brush	Marty Corry	Susan Entin	Carol Girard	Laura Hayman
Jeanne Baranek-Olmstead	Susan Buchholz	Michele Craig	Benjamin Eovaldi	Garry and Evie Gleckel	Jukka Heikka
Tania Barber	Lauren Buck	Leslie Crisostomo	Diana Erani	Karin Goins	Tomma Henckel
Shaliwa Barbiye	Nick Burka	Alba Cruz Davis	Priscila Espinosa	Phil Gona	Ana Hidalgo
Margot Barnet	Noreen Burke	Aine Cryts	Stephanie Ettinger de Cuba	Sabrina Gonzalez	Steve Holmes
Kristen Barnicle	Anna Bury	Michael Curry	Brenda Evans	Phillip Gonzalez	Jennifer Honig
Naomi Bar-Yam	Samantha Isabel Calero	Helena DaSilva Hughes	Ruth Ever	Chrismery Gonzalez	Douglas Huber
Shelley Bascome	Sharon Callender	Yuki Davis	Michele Farry	Christine Gordon-Davis	Sallie Craig Huber
Allison Bauer	Devan Carr	Hellen Ddungu	Louis Fazen	Tami Gouveia	Michael Hugo
Cynthia Bayerl	Sonia Carter	Teresa Dean	Joe-Ann Fergus	Katherine Greiner	Stephany Infante
Sanford Bell	Kerniah Casseus	Daniel Delaney	Maria Ferrero	Dorcas Grigg-Saito	Melissa Interest
Sarah Benes	Stacey Chacker	Catherine DeLorey	Rachel Fichtenbaum	Gulson Gul	
Elizabeth Bennett			Anna Marie Finley		

Paula Ivey Henry	Rebekka Lee	Gail Merriam	Anne Perry	Betsy Shally-Jensen	Rebecca Verhulst
Claude Jacob	Chavella Lee-Pacheco	Alice Miele	Deborah Phillips	Erica Sharp	Amyrah Vicarie
Hilary Jacobs	Libby Levison	Tim Miley	Albert Pless	Tara Shea	Nikita Viera
Jenifer Jaeger	Carly Levy	Steven Miller	Karen Politis	Kaitlin Sheedy	Lora Wade
Thea James	Barry Levy	Mirand	Virk	Alex Sheff	Bryanne Wainford
Patricia Janulewicz Lloyd	Wenjun Li	Roeshana Moore-Evans	Valerie Polletta	Amie Shei	Phoebe Walker
Frances Jeffries	Grace Lichaa	Justin Morgan	Lauren Poteat	Stephen Shestakofsky	Angela Wangari Walter
Swannie Jett	Jacqui Lindsay	Corinne Mullarkey	Barry Potvin	Adam Shyevitch	Chamaine Washington
Lara Jirmanus	Barbara L'Italien	Nadine Mumford	Kalpana Poudel-Tandukar	Risa Silverman	Deborah Washington
Ronald Johnson	Jennifer Logan Coyle	Christine Murphy	Deborah Putnam	Jodie Silverman	Miriam Weil
Griffin Jones	Savannah Lorenc	Laura Nasuti	Joan Quinlan	Kim Simonian	Sara White
Stephen Jones	Kate Lytton	Jasmine Naylor	Lisa Ranghelli	Hathy Simpson	Peggy Wiesenberg
Susan Joss	Sarah MacDonald	Candace Nelson	Jennifer Raymond	Kent Siri	Ariana Williams
Kevin Jura	Keith Mahoney	David Newman	Sigalle Reiss	Beverly Smith	Brigid Williams
Michele Keane-Moore	Nancy Manzello	Judith Norsigian	Steven Ridini	Clyde Smith	Benjamin Wood
Briana Keating	Edward Marakovitz	Jennifer Obadia	Lisa Robinson	Elizabeth Sommers	Mariel Wrean
Caren Keller	Caitlin Marquis	MaryAnn OConnor	Andrea Roche	Jose Soto	Abdiasis Yalahow
Kimberly Kelly	Sandra Martin	Stephanie Oddleifson	Melissa Rodriguez	Ramon Soto	Emily Yerby
Alyssa Kence	Atyia Martin	Lea Susan Ojamaa	Jacqueline Rodriguez-Louis	Lia Spiliotes	
Mark Kennedy	Ann Martin	Idowu Oladayiye	Robert Rofosky	Laurie Stillman	
Barry Keppard	Nancy Martinez	John Olander	Jose Luis Rojas	Patricia Strizak	
Deanna Kerkhof	Airin Martinez	John Olawepo	Nicole Roos	Michelle Stuart	
Theodore Kirousis	Lynette Mascioli	Joice Oliveira	Jovanny Rosado	Maggie Super Church	
John Kleschinsky	Theresa Mason	Kene Orakwue	Betsy Rosenfeld	Karen Swietek	
Jamie Klufts	Kim Mathews	Bernadette Orr	Brian Rosman	Shyam Tanguturi	
Elena Kontogli	Christina Mathews	Amparo Ortiz	Rachel Roth	Aswita Tan-McGrory	
Milton Kotelchuck	Kathy Matthews	Selina Osei	Cindy Rowe	Tim Temple	
Alex Kramer	Kathleen McCabe	Marisa Otis	Kathryn Rucker	Dolores Thibault-Muñoz	
Dr. Heidi Kummer	Katherine McConnell	Marie Pacius	Megan Sandel	Anne Thompson	
Jo-Ann Kwass	Donna McCormick	Ruth Palombo	Katherine Saunders	Sally Thompson	
Tina LaCourse	John McDonough	Maile Panerio-Langer	Nancy Schiff	Ralph Timperi	
Wendy Landman	Kara McLaughlin	Chelsey Patriss	Anthony Schlaff	Karla Todd Barrett	
Donna Latson Gittens	Heather McMann	Elise Pechter	Robin Schmidlein	maga troncoso	
Carol Lavoie Schuster	Geraldine Medina	Deborah Peckham	William Schmidt	Kathy Tuan-MacLean	
Thuan Le	Maurice Melchiono	Allyson Perron Drag	Pamela Schwartz	Lindsey Tucker	
Mary Lee			Robert Seifert	Jennifer Valenzuela	
Celeste Lee			Charles Selleck		
			Brittany Seymour		

 mapublichealth.org

 @MAPublicHealth

 @MAPublicHealth

 Massachusetts Public Health Association
50 Federal Street, 8th Floor
Boston, MA 02110
857-263-7072

